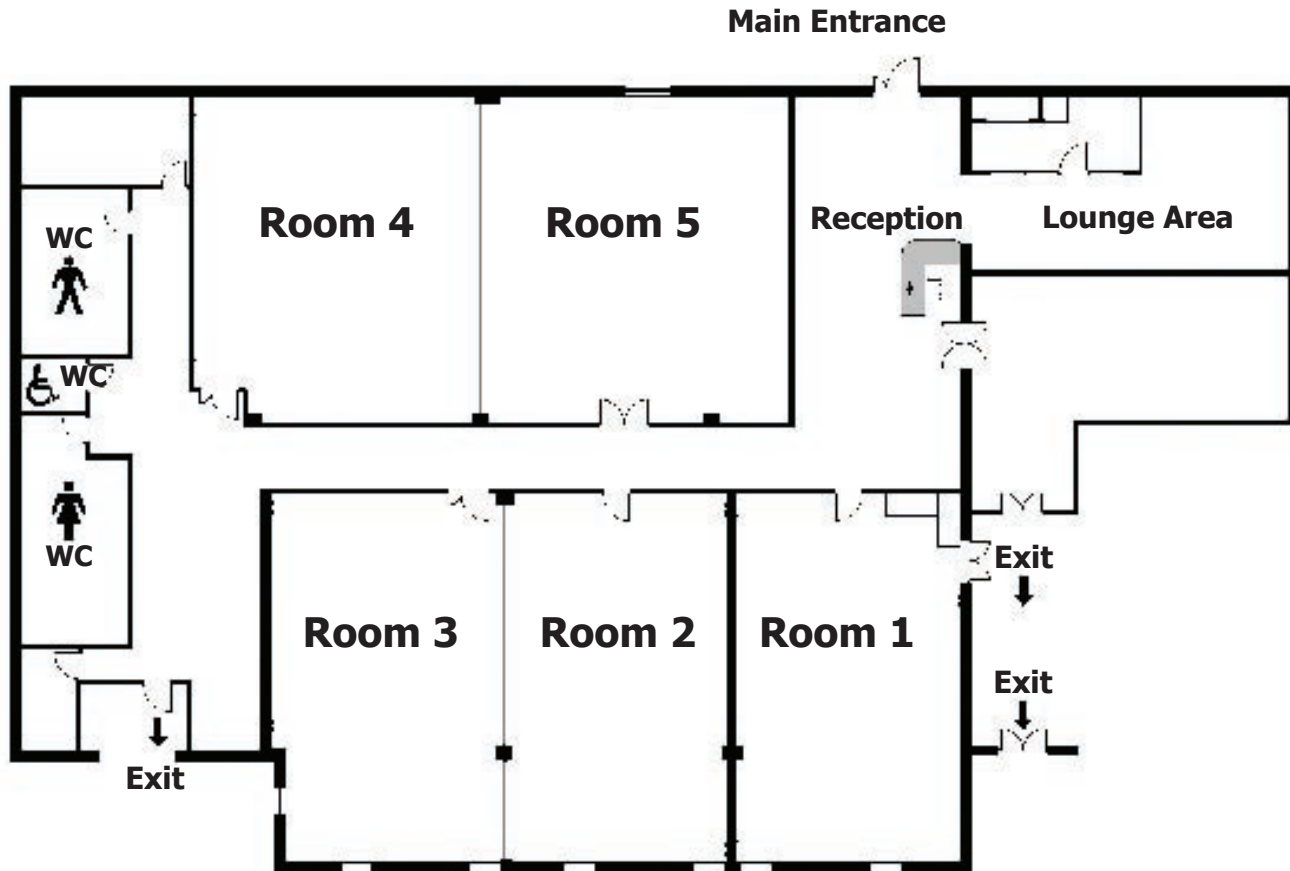
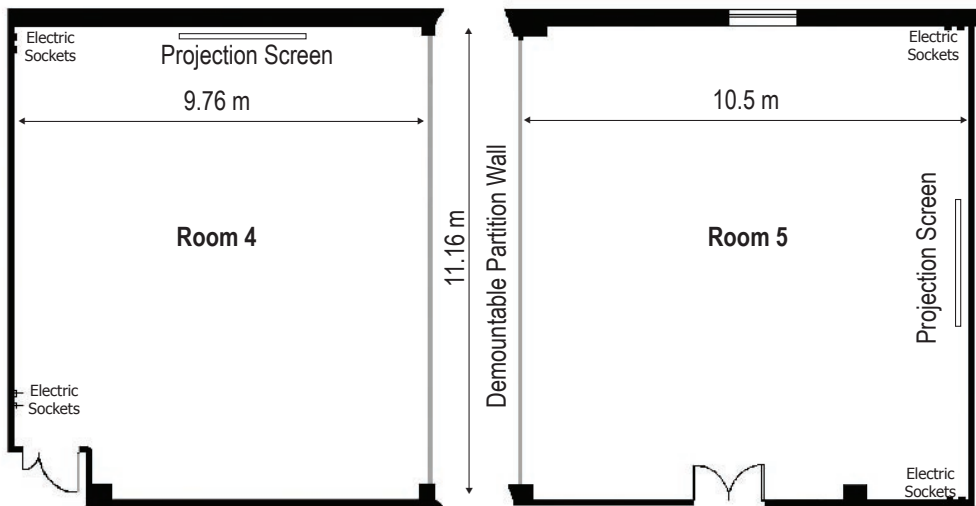


**Training Room Specifications**

# Floor plan and room layout for the MPH Training & Conference Centre

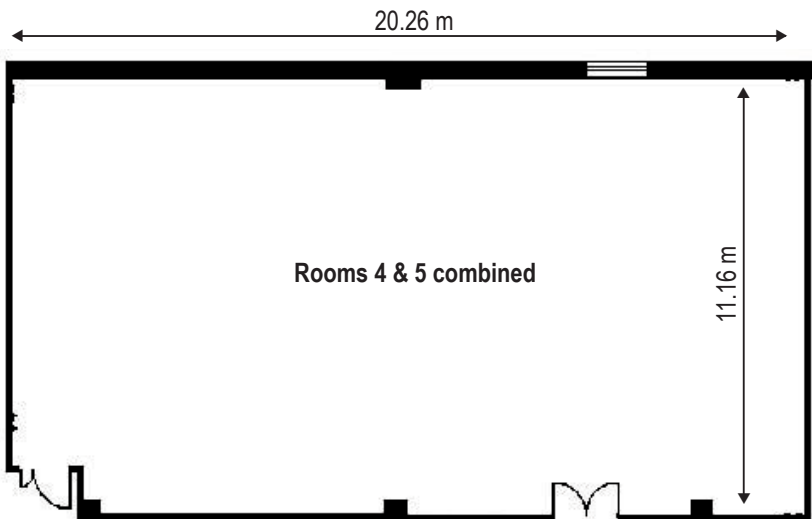


Large free parking areas located at the front and the rear of the building  
Blue badge parking immediately outside the main entrance



The MPH Training & Conference Centre has five state-of-the-art fully equipped meeting rooms that can accommodate from five to 150 delegates, plus a 27-seat cinema in our adjacent head office site.

## FIRST-CLASS FACILITIES

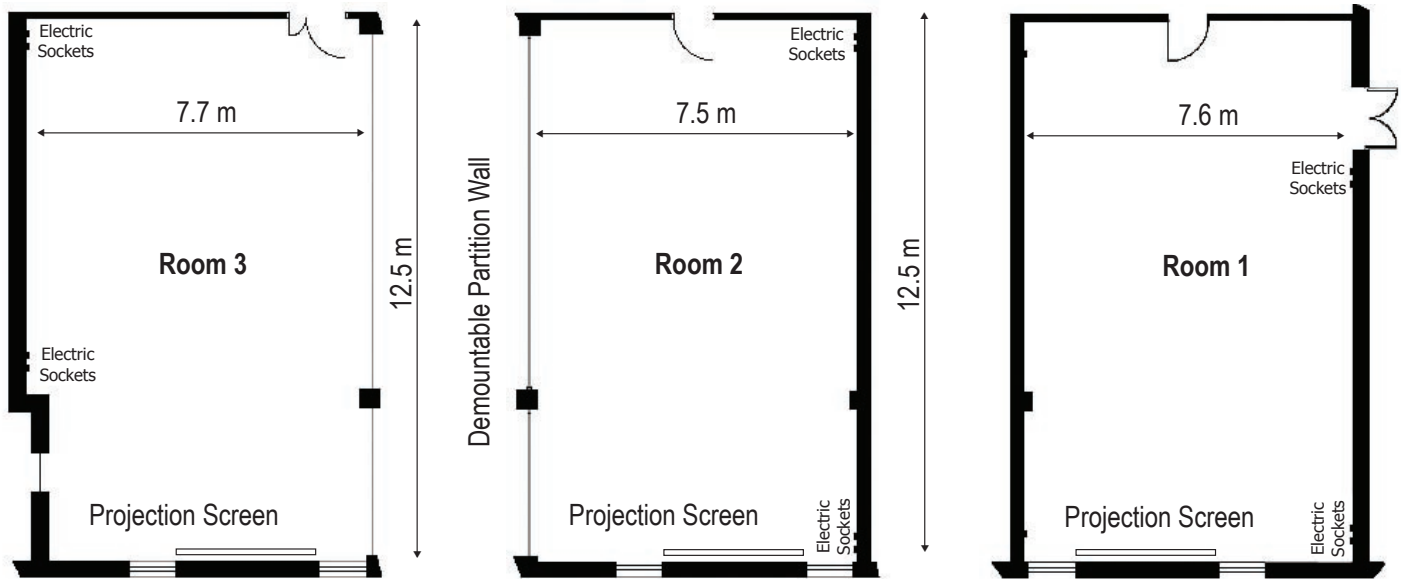


Rooms 4 and 5 can be joined together to provide an even greater space for your event

### ROOM LAYOUTS

The rooms can be laid out in a variety of configurations to complement the format of your meeting. For suggestions on possible schemes and the numbers that each room can accommodate, please refer to the table within the brochure.

Two pairs of rooms (rooms 2/3 and 4/5) also have demountable partition walls and when opened up provide an even larger space to hold your event.



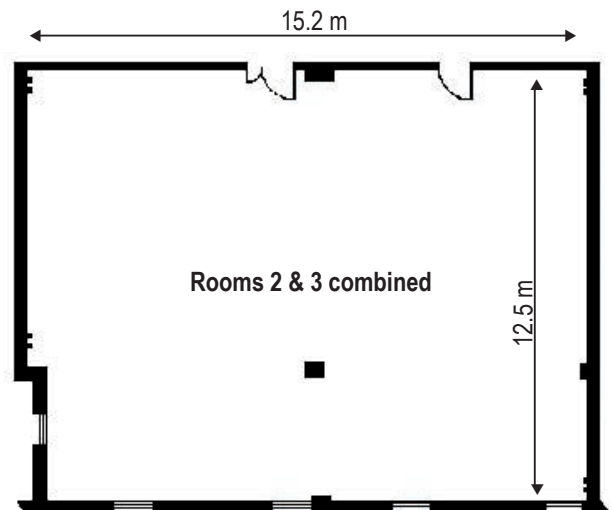
## FLEXIBLE SERVICE

### EQUIPMENT

Each room is fully equipped with everything you need to hold a successful event including:

- drop-down screen
- Barco datagraphic projector
- laptop
- DVD and video
- overhead projector
- Internet connection (paid for service)
- flipcharts
- whiteboard (available on request)

Use of this equipment is included in the standard room hire charge unless otherwise stated. Full technical support is available on-site.



Rooms 2 and 3 can be joined together to provide an even greater space for your event